

MEN-6532

Managed Layer 2 Aggregation Gigabit Ethernet Switch
24-slot 100FX/Gigabit SFP + 4 Gigabit Combo Ports



Description

The MEN-6532 Managed L2 Aggregation switch is a highly integrated, scalable and future-ready solution for Metro FTTX and Enterprise networks. Deployed next to core, the switch is designed with impressive yet simple-to-use management features, comprehensive QoS mechanisms and robust security functions to deliver more controlled services on a highly secure network. Integrated with enhanced Layer 2 features, the MEN-6532 delivers maximum performance, power and reliability particularly for high density subscriber base with high ARPU.

As a 24-slot 100FX/Gigabit Layer 2 switch with 4-Gigabit combo ports, the MEN-6532 offers gigabit solution with dual-speed connectivity to support high bandwidth requirements of large-scale networks such as campus, metropolitan IP and enterprise networks. Supported by SFP DDMI and Battery backup option, the MEN-6532 reduces the complexity in monitoring SFP parameters and increases device availability, much needed solutions for today's networking environments. The MEN-6532 is a cost-effective and secure switching solution for quick expansion and growth of your network, protecting your network investments.

Features Highlight

Metropolitan and Campus Advantages

The MEN-6532 is an ideal switch for both metropolitan and campus aggregation deployments. It offers an economical, power efficient solution for aggregating with 24-slot 100FX/Gigabit SFP and 4 Gigabit Combo ports, at capable of providing a switching fabric of 56Gbps and high throughputs. The task of upgrading LAN to cater the increasing demands of high bandwidth is now simplified using the MEN-6532. Service providers can connect up to 28 networking devices to the switch and using its multi-rate SFP ports they can serve their subscribers who opt for any high-bandwidth packages.

Multicast Video Service Support

Deploying multicast applications such as IPTV has never been easier than before with comprehensive multicast traffic functions, IGMP snooping and MVR, in the MEN-6532. IGMP snooping regulates multicast traffic in a given VLAN and MVR operates with hosts on different VLANs in a Layer 2 network. These features on isolate the multicast streams and significantly reduce traffic from streaming media and other bandwidth-intensive IP multicast applications for better bandwidth. Thereby, the MEN-6532 supports applications that use multi-traffic in large scale across the network, saves network bandwidth, reduces operational burden and enhances the overall network performance.

Comprehensive QoS Mechanisms to Assign Priority

Network applications need different levels of services delivered to them reliably without any transmission delays and interruptions. The MEN-6532 has comprehensive QoS mechanisms that assign priority to applications and send only specific dedicated traffic to them. In addition, bandwidth management functions of the switch allocate greater bandwidth for mission-critical communications. With increased control, administrators can prevent unpredictable errors and utilize the bandwidth more effectively.

Enhanced Control and Security

Built with enhanced defence mechanisms, the MEN-6532 delivers robust security. Port security limits only hosts using secure MAC addresses to communicate with the switch, while port isolation secures certain ports and prevents unnecessary inter-VLAN communication between ports. Other security mechanisms such as DHCP snooping offers a convenient central management solution to uniquely identify, locate and manage the task of assigning IP addresses to every subscriber and ARP inspection provides users with validate access on a more secure network.

Simple and Efficient Monitoring

The MEN-6532's SNMP feature, an industry standard management protocol, enables administrators to centrally manage and monitor the network, and easily but quickly identify issues that impact network performance. With SFP DDMI supported by the switch, administrators can now easily monitor SFP parameters such as temperature, voltage, laser bias current and evaluate SFP's working condition. In addition, administrators can easily monitor device operational status with Hardware monitor function which displays device main health parameters such as voltage, temperature and fans speed.

Features Highlight

Unparalleled Network Performance

Excessive and unnecessary inbound unicast, multicast or broadcast traffic on physical interfaces can degrade your network performance and can even result in complete loss of network service. Storm control and traffic monitor features of the MEN-6532 enables ISPs to effectively monitor and limit incoming traffic to prevent disruption of LAN ports. In addition, loop detection on the switch identifies loops in the network and disables the relevant ports to avoid loop storms, preventing LAN degradation and achieving maximum network performance. These features along with auto-recovery timer deliver robotic methods to control your network automatically.

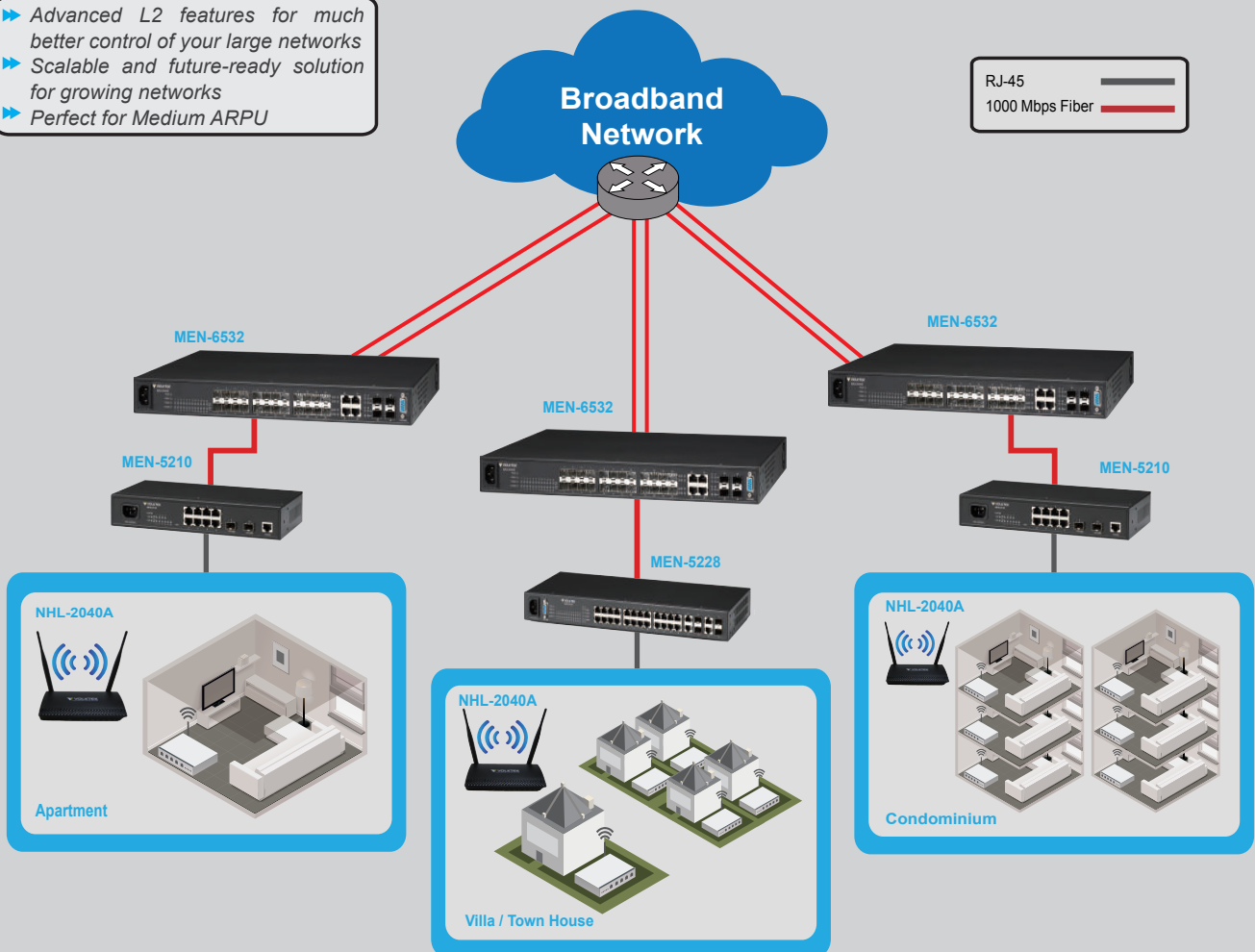
Last-mile Investment Protection

It is critically important for ISPs to protect their last-mile infrastructure from device thefts to avoid delays in delivering network services and loss of your investment. Focusing on this on-field hassle, the MEN-6532 is designed with Device Lock feature, a feature that locks your device to your network. By enabling Device Lock feature, the switch will not function in any network other than its configured network. This innovative feature of the MEN-6532 reduces device thefts and provides a continuous network connectivity saving your infrastructure investments.

Application

Enjoy greater bandwidths and enhanced network performance for your Data and Wireless services

- ▶ Advanced L2 features for much better control of your large networks
- ▶ Scalable and future-ready solution for growing networks
- ▶ Perfect for Medium ARPU



Aggregation Level
 MEN-6532: 24-slot 100FX/Gigabit SFP, 4-Gigabit Combo ports Managed L2 Aggregation Switch

Access Level
 MEN-5210: 8-port 10/100Base-TX, 2-slot Gigabit Multi-rate SFP Managed Access Switch

Access Level
 MEN-5228: 24-port 10/100Base-TX, 4 Gigabit Combo Managed Access Switch

CPE
 NHL-2040A: 1-port 10/100 WAN + 4-port 10/100 LAN, 802.11n 2T2R Wireless Router

Specifications

Features

| | | | |
|--|--|-----------------------------------|--|
| Network Function | | User Security | |
| LACP Support | | Port Isolation | |
| Static Link Trunking | | Static MAC forwarding | |
| Spanning tree Protocol | | Port Security | |
| Rapid Spanning Tree Protocol | | ACL (L2/L3/L4) | |
| Multicast VLAN Registration | | BPDU Guard/Filter | |
| Loop Detection with Recovery Timer | | DHCP Snooping | |
| VLAN Stacking (Q in Q) | | 802.1x Support | |
| Network Storm Protection | | HDoS, ARP Inspection | |
| IGMP Snooping | | | |
| SFP DDMI support | | Traffic Management and QoS | |
| Traffic Monitor | | 802.1Q Tag-based VLAN | |
| | | Port-based VLAN | |
| | | Active VLAN Support 4K | |
| Network Management | | 8 Hardware Queues | |
| Local Console | | SP/WRR | |
| Telnet and CLI | | Storm Control | |
| Web-based GUI | | Rate Limiting | |
| SNMP v1/v2c | | 802.1p/DSCP/ToS Support | |
| RMON (1, 2, 3, 9) | | Management VLAN | |
| Port Mirroring | | | |
| Firmware Upgradeable | | | |
| Configuration Backup/Restore | | | |
| Port configuration, status, statistics | | | |
| Switch Lock | | | |
| Maximum Distances | | | |
| Copper | | 100 m | |
| Console | | 15 m | |
| SFP | | Up to 110 Km | |
| Performance | | | |
| Throughput | | 14,880 pps to 10 Mbps ports | |
| | | 148,800 pps to 100 Mbps ports | |
| | | 1,488,000 pps to 1000 Mbps ports | |
| Switch Fabric | | 56Gbps | |
| L2 Forwarding | | 41.7Mpps | |
| MAC Table Size | | 32K | |
| Packet buffer size | | 2MByte | |
| Jumbo Frame Size | | 9K | |

Standards

| | |
|---------------------|------------------------|
| IEEE 802.3 | 10Base-T |
| IEEE 802.3u | 100Base-TX/FX |
| IEEE 802.3ab | 1000Base-T |
| IEEE 802.3z | 1000Base-SX/LX/LHX |
| IEEE 802.3x | Flow Control |
| IEEE 802.3ad | Link Aggregation |
| IEEE 802.1d | STP |
| IEEE 802.1w | RSTP |
| IEEE 802.1p | CoS Prioritization |
| IEEE 802.1q | VLAN Tagging |
| IEEE 802.1x | Port Authentication |
| IEEE 802.1ab | LLDP |
| IEEE 802.3 | N-way Auto Negotiation |

Power

| | |
|--------------------------|--------------|
| Input Voltage | AC: 100~240V |
| | DC: 36~60V |
| Power Consumption | 55W |

Interface

| | |
|--------------|-----------------------------------|
| Ports | 24 x 100FX/Gigabit SFP slots |
| | 4 x GbE Combo |
| | 1 x RS-232 Console (DB-9, female) |

Mechanical and Environment

| | |
|------------------------------|-------------------------------|
| Operating Temperature | 0°C~50°C |
| Storage Temperature | -20°C~70°C |
| Operating Humidity | 10 to 80% RH (non-condensing) |
| Storage Humidity | 5 to 90% RH (non-condensing) |
| Weight | 4.5kg |
| Dimensions | 440x44x284mm (WxHxD) |

Ordering Information

| | |
|-------------------|--|
| MEN-6532 | Managed Layer 2+ 24-slot 100FX/Gigabit SFP, 4G Combo Switch, w/ AC Power Supply |
| MEN-6532B | Managed Layer 2+ 24-slot 100FX/Gigabit SFP, 4 Gigabit SFP Combo Switch, w/ AC Power Supply |
| MEN-6532D | Managed Layer 2+ 24-slot 100FX/Gigabit SFP, 4G Combo Switch, w/ DC Power Supply |
| FPM-107 | 100Base-FX Multi-mode SFP, 2Km |
| FPM-107-30 | 100Base-FX Single mode SFP, 30Km |
| GBM-132 | 100Base-FX Bi-di Single Mode SFP Module, 20Km |
| GBM-104 | 1000Base-SX 1.25G, Multi-mode SFP, 500m |
| GBM-104-2 | 1000Base-SX 1.25G, Multi-mode, 3.3V, 1310nm, 2Km |
| GBM-104-10 | 1000Base-LX 1.25G, Single mode SFP, 10Km |
| GBM-123 | 1000Base-LX Bi-di Single Mode SFP Module, 10Km |

*Specifications subject to change without notice.

Dimension

