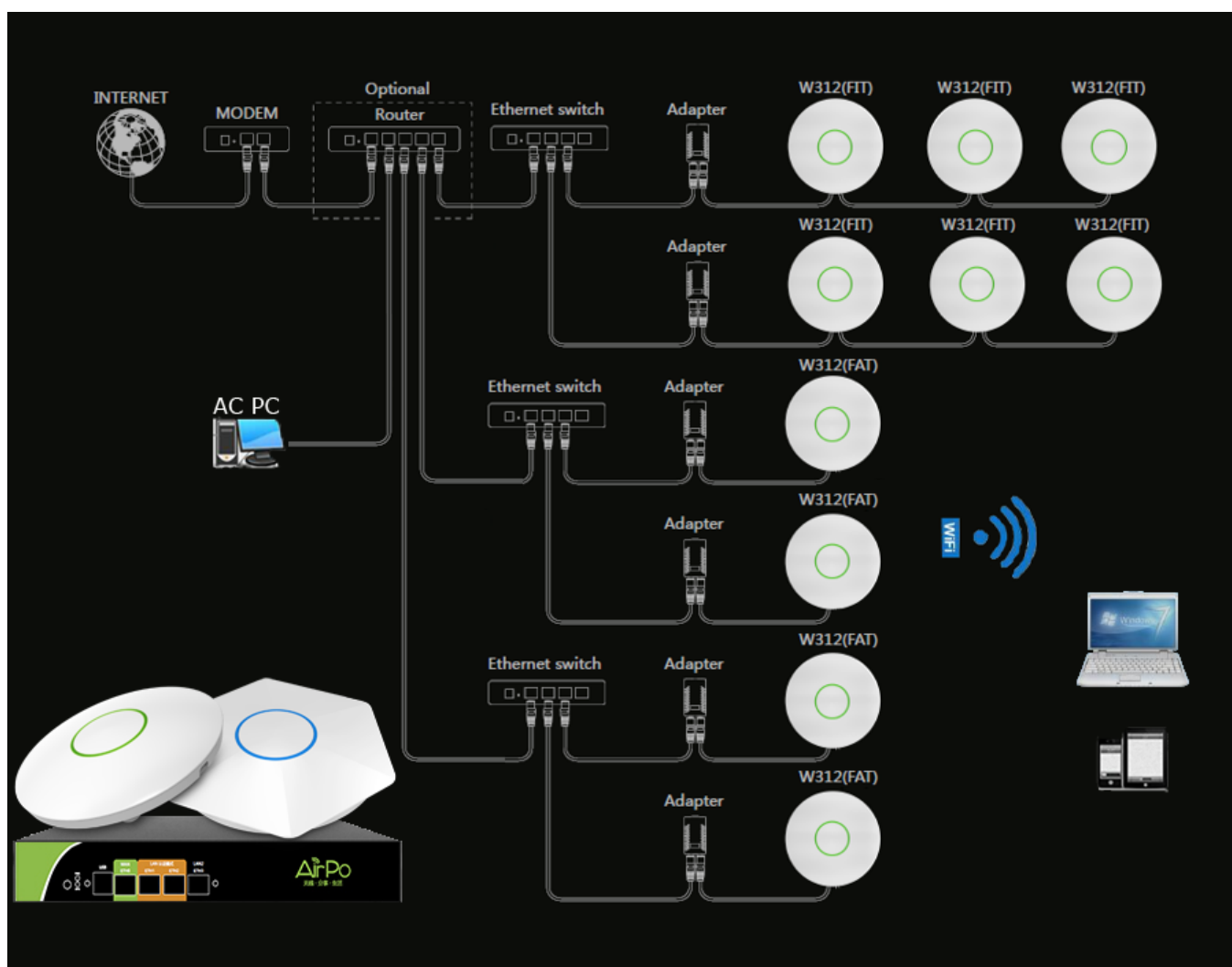


1. Installation

1.1 Environmental requirements:

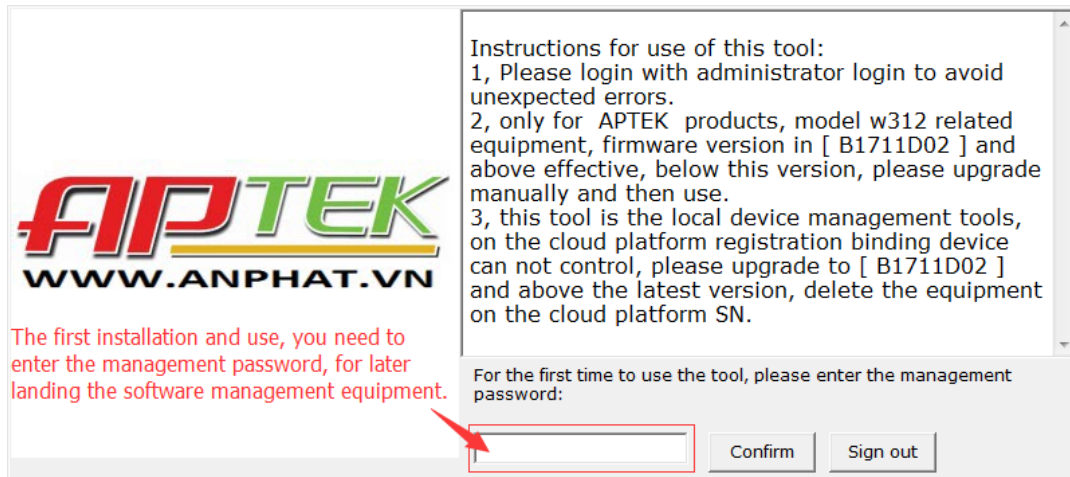
- 1.1.1 Support device model: w312
- 1.1.2 Device firmware version requirements: B1711D02 and above
- 1.1.3 Operating system: Windows 7 and above
- 1.1.4 .net framework: 4.0 and above
- 1.1.5 Memory size: 2G
- 1.1.6 Management authority: system administrator

1.2 Equipment network construction topology



1.3 Installation for the first time:

After downloading the tool, extract it to the D disk directory. For the first time running ACTool.exe, you need to input the management password. After entering or performing functional operation, you need to enter the saved management password.



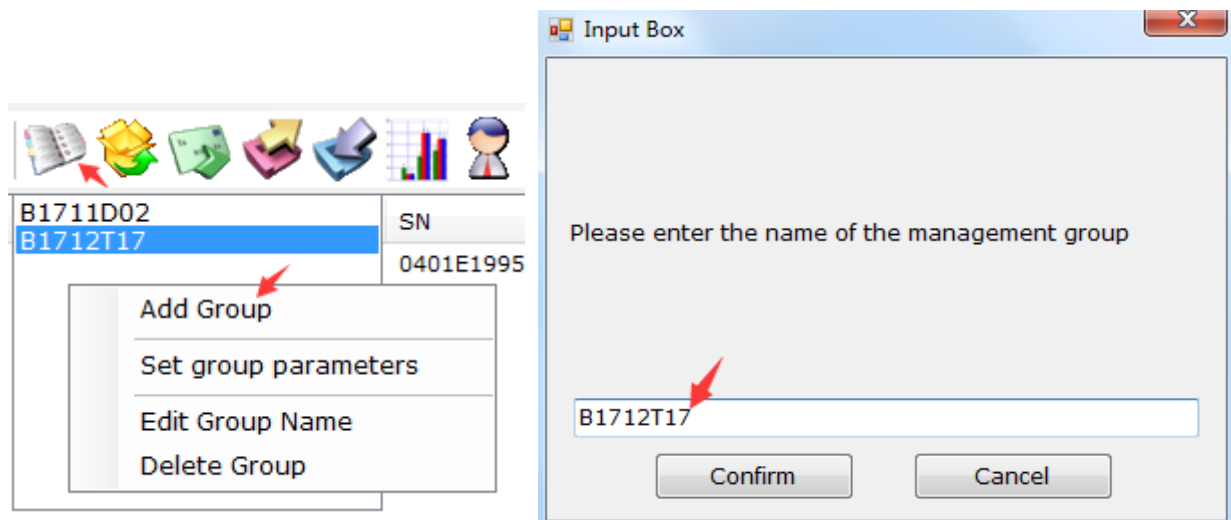
2. Equipment group management

2.1 Add management group

Click on the menu item [Group management], and click the right mouse button to pop the drop-down menu at the next blank list, and select [Add Group].

In the input box below, enter the name of the management group that needs to be set.

Note: when the group name exists, it will indicate that the add fails, and then re operation.



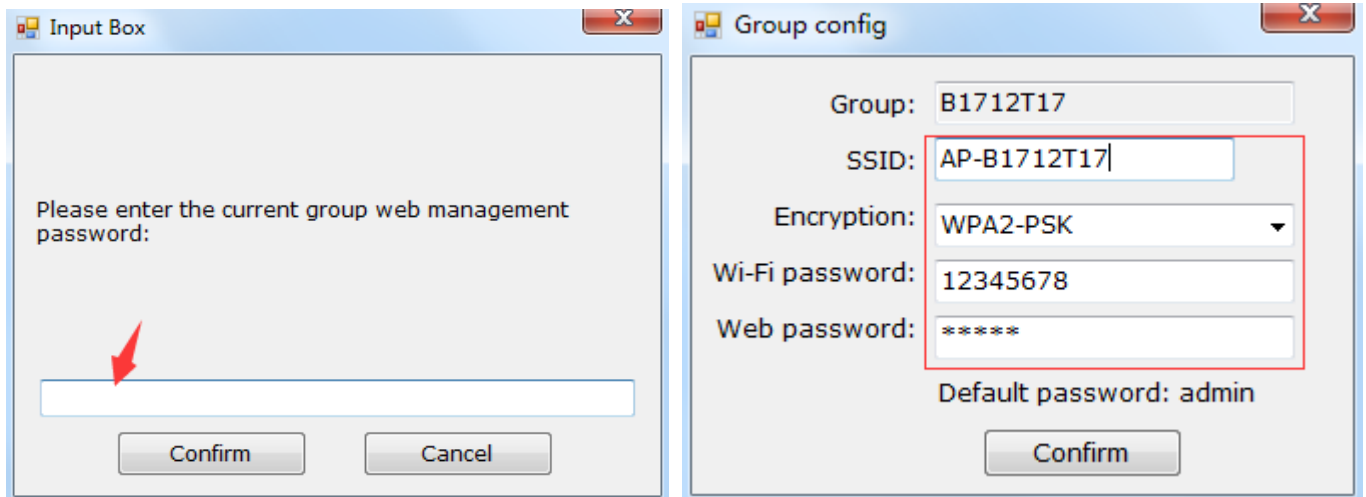
2.2 Set group parameters

Right click the management group that needs to be set, and [select set parameters].

In the window, enter the management group parameters: SSID, Encryption, Wi-Fi password, web management password

Set up, click [confirm]. If the current group has an existing device and saves the parameters, it will automatically send the current configuration to the management group owned device.

Note: the new group does not need to enter the current group of web management password, after the completion of the settings, each modification is required to enter the password, please remember to set the password, in order to prevent landing management.

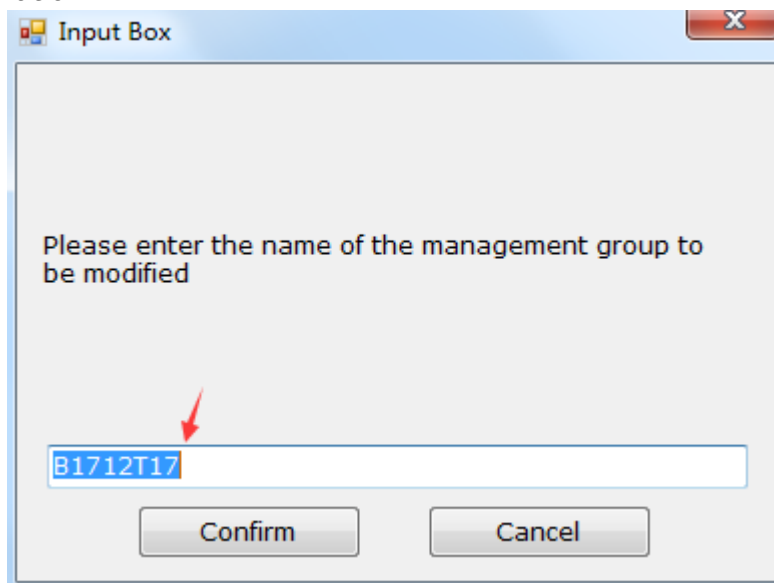


2.3 Edit group name

Right click the management group that needs to be modified, and select the name of the modification group.

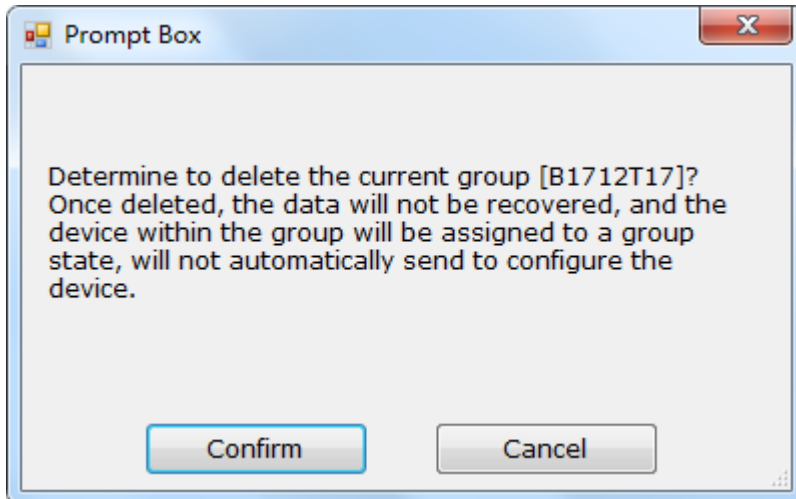
Enter the new management group name and click enter or mouse click to save. If the device is already available in the current group, the group name of the management group device is automatically modified.

Note: when the group name is present, it will prompt the modification to fail, and then re operation.



2.4 Delete Group

Once deleted, the data will not be recovered, and the device within the group will be assigned to a group state, will not automatically send to configure the device.



3. Manual scanning, timing check equipment status

3.1 Preparation:

Equipment firmware version is required to be above B1711D02, otherwise manual firmware version should be upgraded to B1711D02

3.1.1 Cloud platform upgrade:

On the cloud platform bound equipment, you can click upgrade upgrade directly to the latest version

3.1.2 device management page upgrade:

In the web browser input device corresponding to IP, enter the web page management password, open the device management page.

Select system - > Backup / upgrade - > In the brush to write a new firmware item - > Select the firmware file - > Upload firmware - > The firmware update - > Waiting for device restart

Flash new firmware image

Upload a sysupgrade-compatible image here to replace the running firmware. Check "Keep settings" to retain the current configuration (requires an OpenWrt compatible firmware image).

Keep settings: ☐

Image:

Choose file

w312-v1r3-B...upgrade.img

Flash image...

AP Wizard Status ▾ System ▾ Network ▾ AP Management ▾ Logout

Flash Firmware - Verify

The flash image was uploaded. Below is the checksum and file size listed, compare them with the original file to ensure data integrity.
Click "Proceed" below to start the flash procedure.


- Checksum: 69e0bad5db3bf57369c37d8af78f8f19
- Size: 6.94 MB (7.44 MB available)
- Note: Configuration files will be erased.

Cancel

Proceed

System - Flashing...

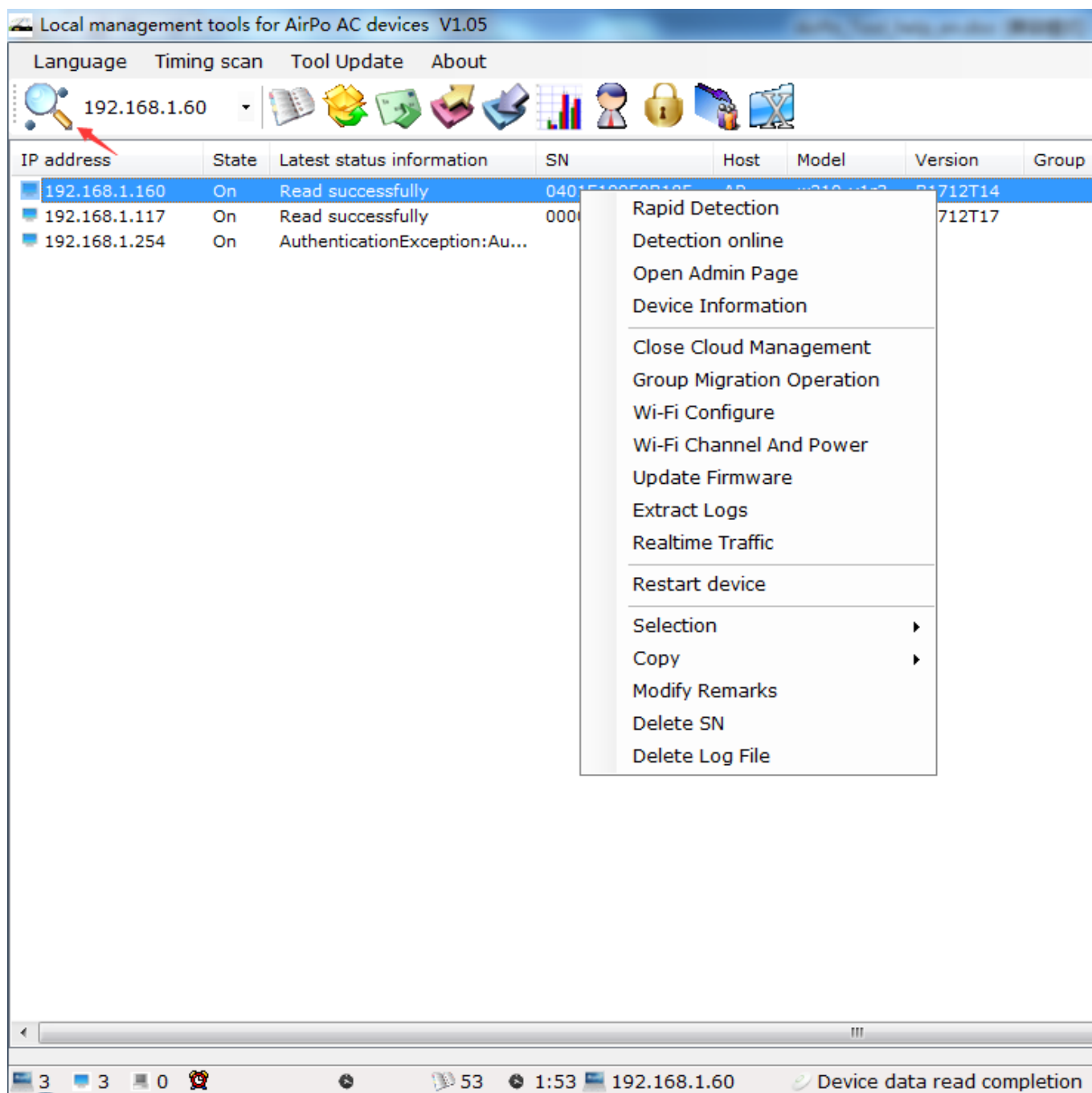
The system is flashing now.
DO NOT POWER OFF THE DEVICE!
Wait a few minutes until you try to reconnect. It might be necessary to renew the address of your computer to reach the device again, depending on your settings.

 Waiting for changes to be applied...

3.2 First manual scanning equipment:

3.2.1 Click on the menu toolbar scan item, in the pop-up window to select a IP as the management device IP, the IP must be able to communicate with the device, click [Run] began scanning equipment, and the device information displayed in the list.

3.2.2 Selects the list item in the device list, right-click, and select the function operation from the pop-up menu item.



3.3 Timing detection device status

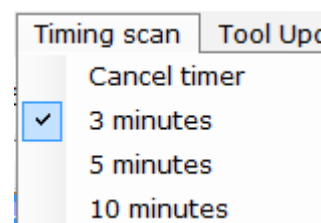
3.3.1 Cancels timed checks: Cancel the timed check function being executed.

3.3.2 3 minutes timing check

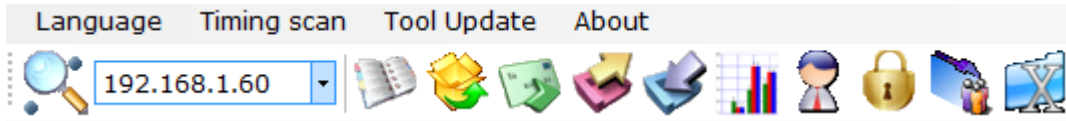
3.3.3 5 minutes timing check

3.3.4 10 minutes timing check

Note: only if there is a device in the list can be executed, otherwise you need to manually scan the equipment once again.

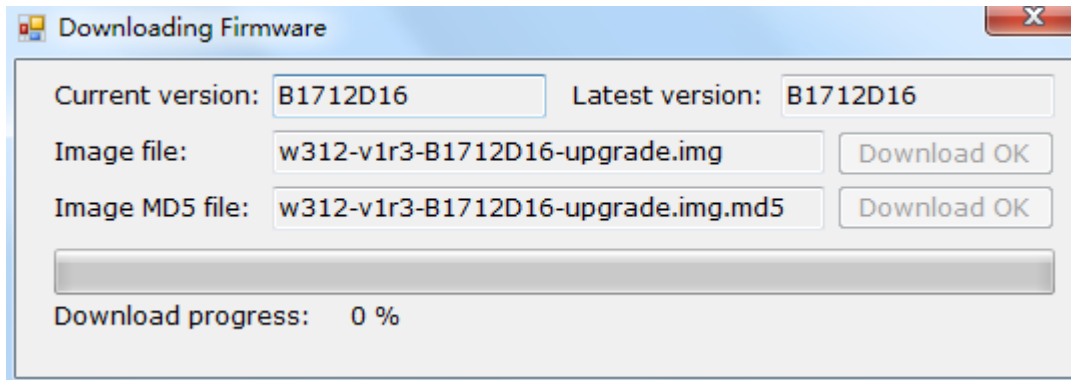


4. Menu bar function item



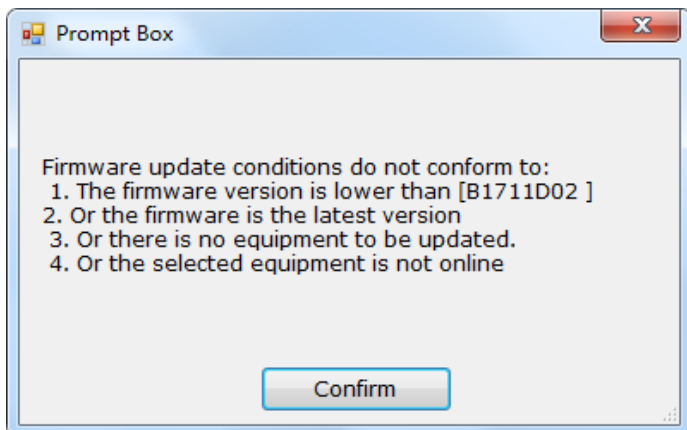
4.1 Firmware Download

Click the menu bar [Firmware], pop up the download window, automatically check whether the version has new firmware, or automatically download to the local directory.

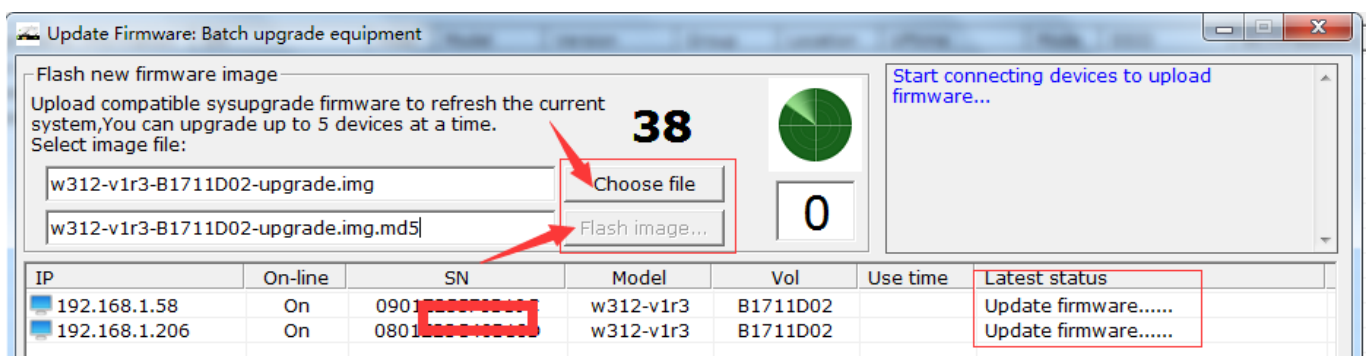


4.2 New firmware for device upgrade

Select the upgrade device in the device list, click the menu bar [Upgrade], automatically detect whether the selected equipment meets the upgrade requirements, without the device, then pop up the prompt window, in accordance with the equipment, then enter the upgrade interface window to upgrade.

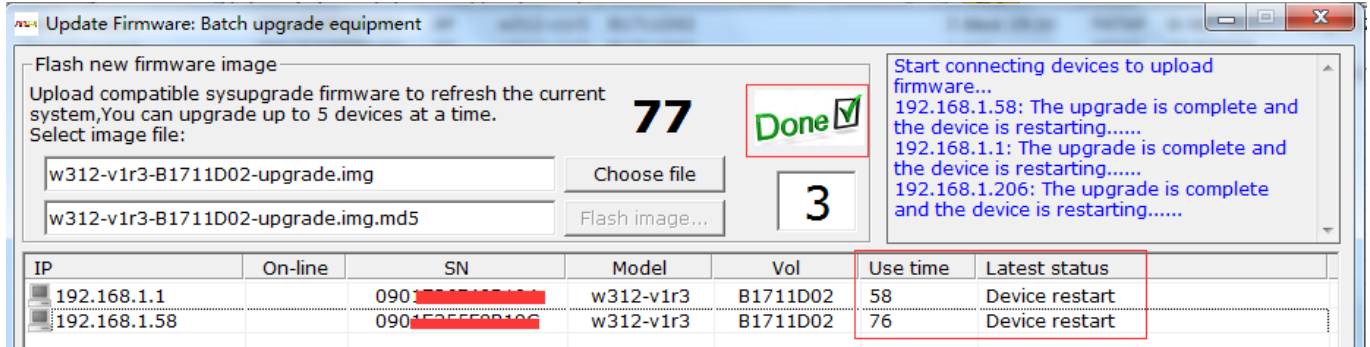


4.2.1 Click on [Choose file] to select the firmware version to update, click [Flash image]... Start uploading the firmware and updating the device



APTEK AC Tool Operating instructions

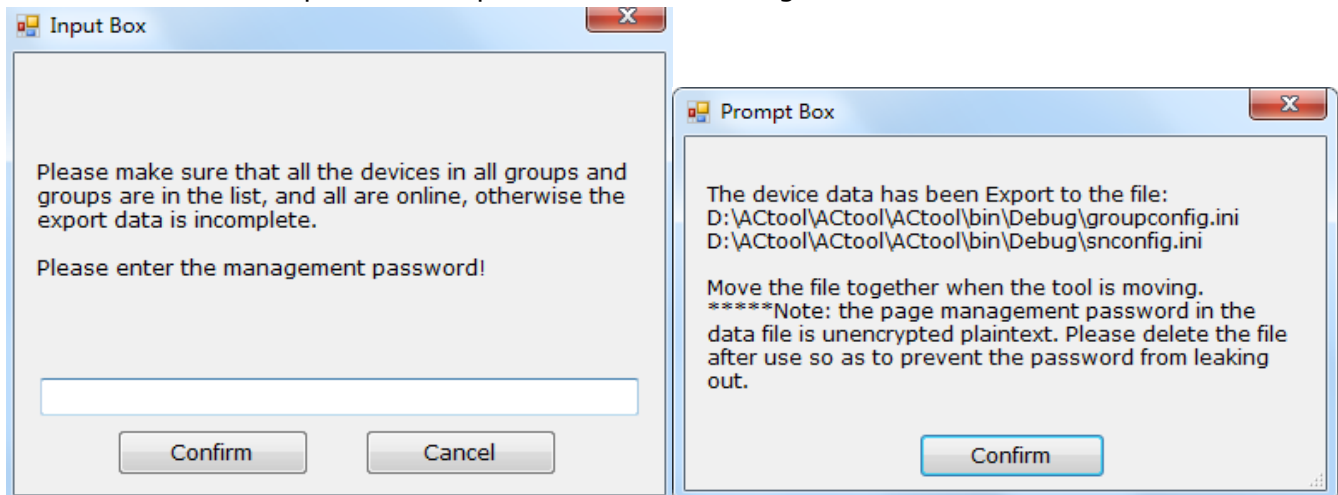
4.2.2 The device update list automatically displays the current device update status. After the update is completed, the Done icon is displayed, the device update configuration is restarted, and the first boot time is longer after the firmware update. Please wait. Return to the main window and wait for 2 minutes to refresh the list of devices and check whether the device version is an updated version.



4.3 Export group data and device data

Click the menu bar [Export], enter the management password, pop-up window, according to the instructions required to export to the current directory specified file.

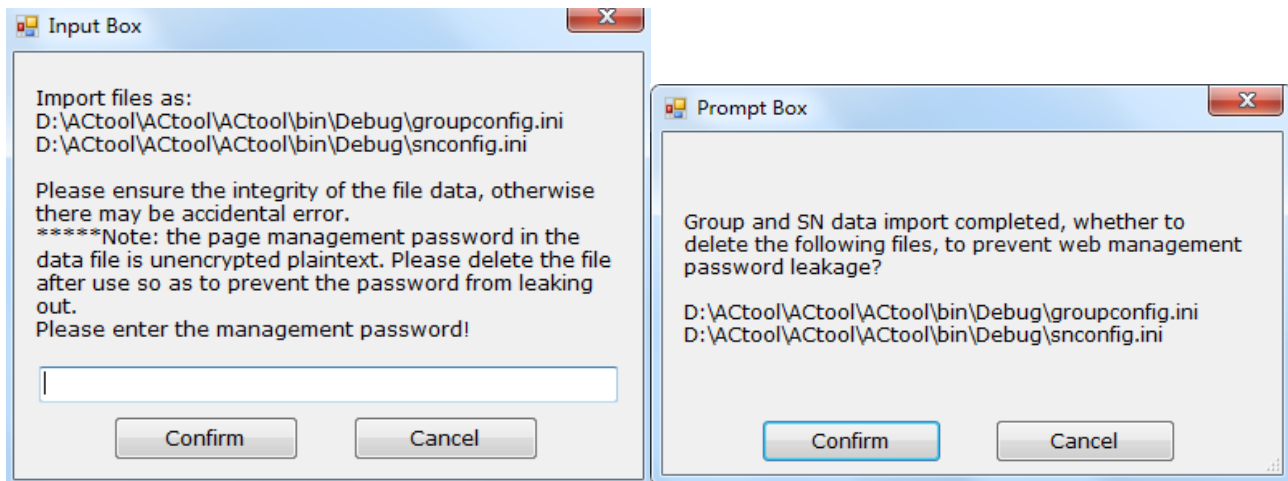
- 1) [Export] function item, Migrate device data only when replacing management computer
- 2) When you forget the password management of the device page, you can find the corresponding record of the device SN through the exported data
- 3) The password in the data file is encrypted, which is not encrypted. After use, please delete the file to prevent the password from leaking



4.4 Import group data and device data

Click on the menu bar [Import], enter the management password, pop-up window, according to the prompts to import data to the software.

- 1) [Import] function item, Only after the management computer is replaced, the migration device data is imported into the software
- 2) The password in the data file is encrypted, which is not encrypted. After use, please delete the file to prevent the password from leaking

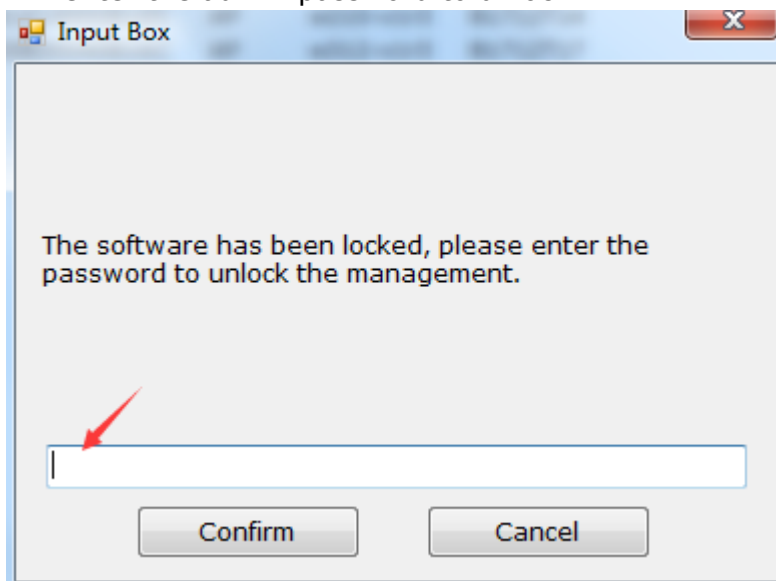


4.5 Manage password settings

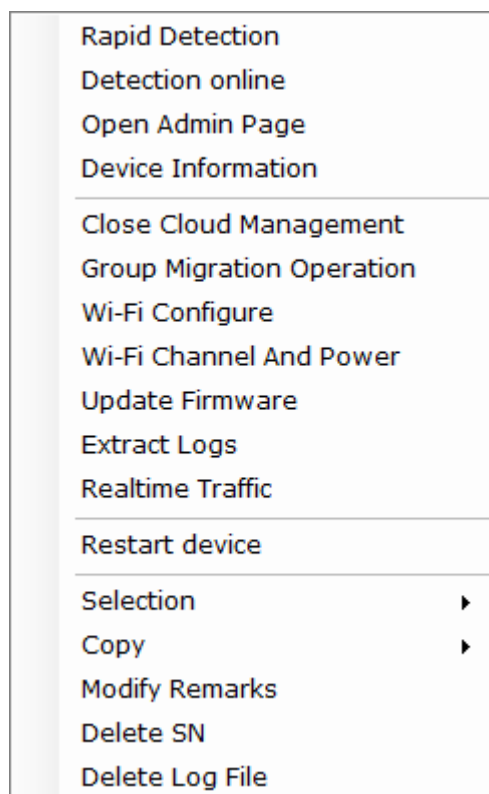
Click on the menu bar [Password], enter the management password, pop-up window, enter the need to modify the new management password, click [Confirm] to save, login next time you need to enter a new management password before landing

4.6 Tool lock

Click on the menu bar [Lock], you can lock the tool, prohibit the operation of all functions, enter the admin password to unlock.



5. Device list right-click menu



5.1 Rapid detection & Detection online

By [Detection online] the function item. You can detect whether the selected device is online and read the device data information

Note: when testing, the display device is not online, but can be displayed in Ping mode, when the communication is normal, the device can be restarted

5.2 Open admin page

By [Open admin page] the function item. You can open the page management page of the selected device

5.3 Device Information

By [Device Information] the function item. The current device data information can be displayed

5.4 Close cloud management

By [Close cloud management] the function item. The device cloud management function can be shut down. The device that closes this function will not report data to the cloud platform, and the cloud platform will not be sent to configure the device

Note: the use of local device management software, you must shut down the cloud management function, to prevent the cloud platform automatically send down to configure the device, resulting in abnormal device operation

5.5 Group migration operation

By [Group migration operation] the function item. You need to enter a password for the current device or the current group's web management password. The same group of devices, or no group, but with the web page management password device, moved to the specified group, and re sent to configure the selected device

Note: when the migration to the group is empty, the device will be set to a non group state, and its original data will not change. Remember the current group's Web admin password.

Input Box

Modification of the device group:
1.Can only choose the same group of equipment, or are no group state equipment.
2.According to the current device, the same web password device is selected when there is no group.
3.The firmware version is valid at [B1711D02] and above
4.Effective only for online devices
Please enter the Web admin password for the current device:

Confirm Cancel

Group migration operation

Current group name:

Migration to group:

SSID:

Encryption:

Wi-Fi password:

Web password:

Default password: admin

Confirm

Prompt Box

Are you sure you want to modify the current data?
web password : admin

Confirm Cancel

5.6 Wi-Fi configure

By [Wi-Fi configure] the function item. You need to enter a password for the current device's web page management. You can reset the selected device SSID, encryption, wireless cryptography, web management password, and re sent to configure the selected device

Note: the current group can operate without group, when there is a group, you can group management unified settings

Input Box

Please enter the Web admin password for the current device:

IP: 192.168.1.117
SN: 0000E00016C

Confirm Cancel

Group config

Group:

SSID:

Encryption:

Wi-Fi password:

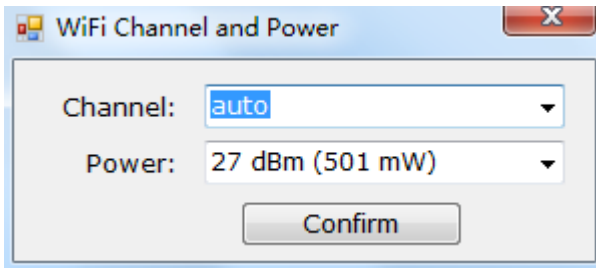
Web password:

Default password: admin

Confirm

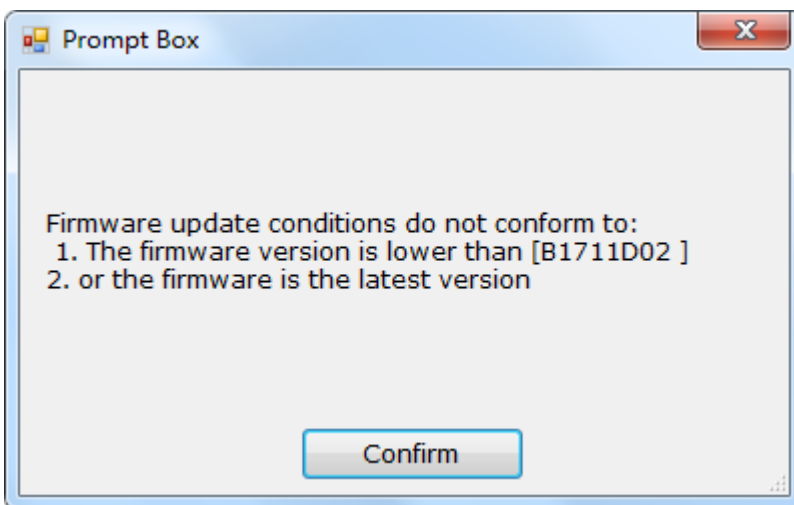
5.7 Wi-Fi Channel and Power

By [Wi-Fi Channel and Power] the function item, The channel and power can be reset for the selected device



5.8 Update Firmware

By [Update Firmware] the function item. The selected device can update the firmware to the latest version through the condition check and the equipment that meets the requirements

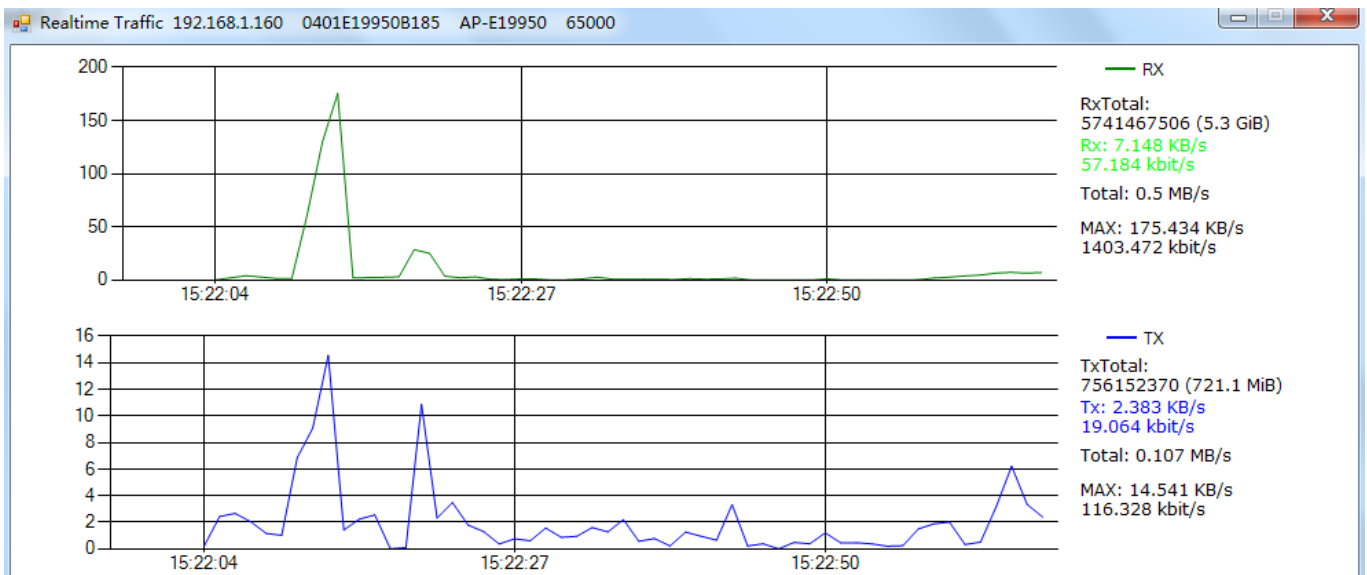


5.9 Extract logs

By [Extract logs] the function item. You can extract the current device running log to the management software snlog directory, and automatically open.

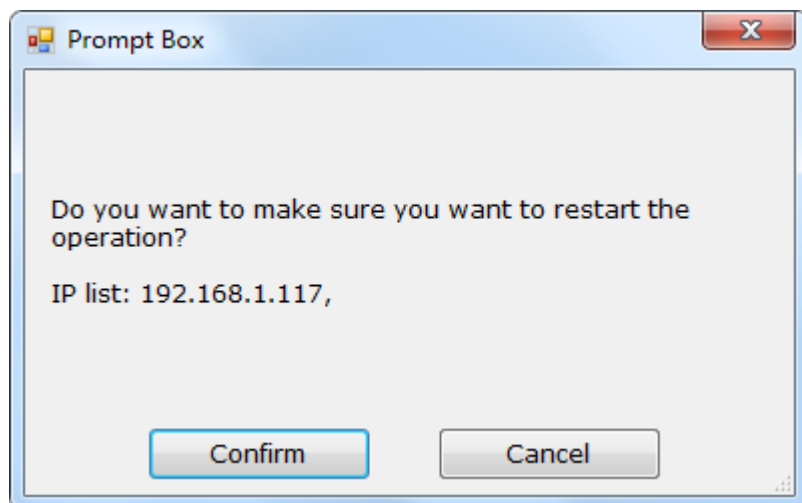
5.10 Realtime Traffic

By [Realtime Traffic] the function item. Can view the current device upload and download real-time load data



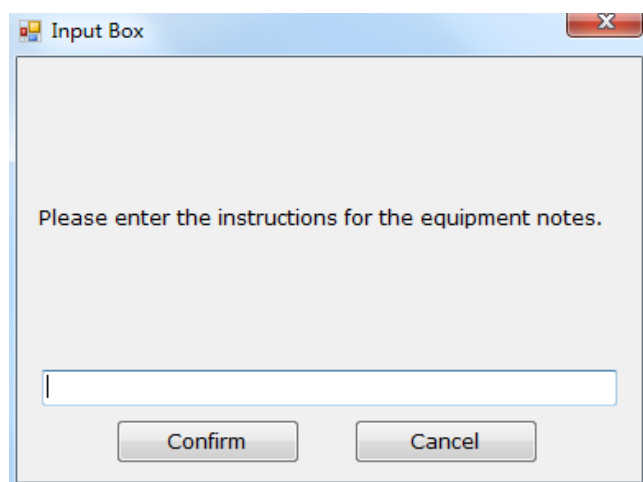
5.11 Restart device

By [Restart device] the function item. Reboot the device with too long running time



5.12 Modify Location

By [Modify Location] the function item. Can set or cancel equipment installation location or memo equipment information



5.13 Delete SN

By [Delete SN] the function item. The device SN related data can be deleted, and the device which does not need to be displayed can be deleted by this function

Note: once deleted, it will not be restored!

