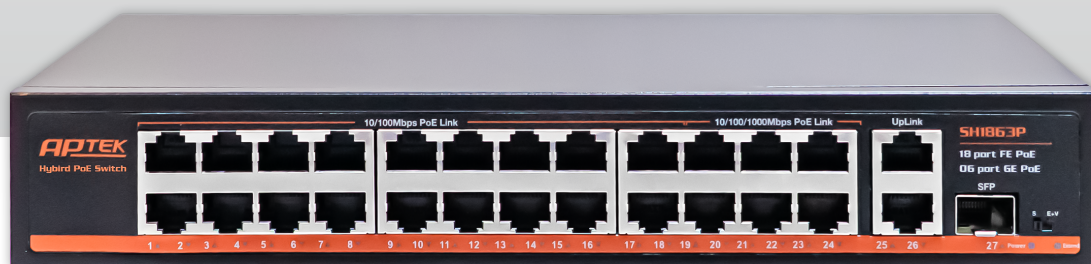


APTEK SH1863P

Unmanaged Hybrid PoE Switch

APTEK SH1863P is an Unmanaged Hybrid PoE Switch (have both Fast Ethernet and Gigabit Ethernet PoE Ports), providing cost-effective advantages for small offices or households. It has 18 Fast Ethernet and 6 Gigabit Ethernet RJ45 PoE/PoE+ ports with a power budget of 400W. It is also equipped with 2 Gigabit Ethernet RJ45 and 1 Gigabit SFP Uplink ports. It supports AI watchdog function, supports PoE camera drop detection, automatic power-off and restart.

APTEK SH1863P supports Standard (S) mode and Extend + VLAN (E+V) mode. The Extend + VLAN operation mode has a port-based VLAN function, which can help prevent the multicast or broadcast of IP Cameras from interfering with each other; and the transmit rate of PoE Ports will be limited at 10Mbps but will allow distance increase up to 250 meters, very helpful for connecting PoE cameras from long distance.



Features:

- 18 * 10/100Mbps and 6 * 10/100/1000Mbps RJ45 PoE ports (Support 802.3af/at)
- 2 * 10/100/1000Mbps RJ45 ports
- 1 * Gigabit SFP Slots
- Whole Power: 400W
- Each port supported by MDI/MDIX auto flip and self-negotiation
- Support IEEE802.3x flow control for Full-duplex mode and backpressure for Half-duplex mode
- Automatically detect PoE devices and supply the power, won't damage the non-PoE devices
- Supports Extend + VLAN mode for long distance PoE camera connectivity solutions

Applications:

- Wireless Access Point
- IP Camera
- IP Phone
- Computer Networks



Specifications:

Model	SH1863P
Ports	18 * Fast Ethernet + 6 * Gigabit Ethernet RJ45 PoE/PoE+
	2 * Gigabit Ethernet RJ45
	1 * Gigabit SFP
Max. Power Per Port	15.4W/30W
Whole Power	Max. 400W
PoE Protocol	IEEE 802.3af/at
PoE Type	End-span
Transmission Distance	Standard mode: 100m Extend + VLAN mode: 250m (speed limited at 10Mbps) on PoE Ports
Network Standard	IEEE 802.3, IEEE 802.3u, IEEE 802.3x
Network Medium	10/100/1000Base-TX: 5 Class and above non shielded twisted pair
Switch Capability	21.6 Gbps
Forwarding Mode	Store and forward
Forwarding Rate	10Base-T: 14880pps/port
	100Base-T: 148800pps/port
	1000Base-T: 1488000pps/port
MAC Address	4K
Port Function	Power priority mechanism
	Fast and forward
	MAC automatic learning and aging
	IEEE802.3x for Full-duplex mode and back pressure for Half-duplex mode
LED indicator	Link/Act, Power, Extend
Working Environment	-10° ~ 55°C
Input Power	100 ~ 240VAC, 50/60Hz
Weight	1.6kg
Size (L*W*H)	270mm*181mm*44mm

Topology:

